

# Local Care sits at the heart of care transformation across Kent and Medway

## Prevention

Enlisting public services, employers and the public to support health and wellbeing

## Local Care

A new model of care closer to home for integrated primary, acute, community, mental health & social care

## Hospital Care

Optimal capacity and quality of specialised, general acute, community & mental health beds (wave 1 consultation on EK emergency care / elective ortho and K&M stroke services)

## Wider Environment

### Physical & Mental Health

### Local Care

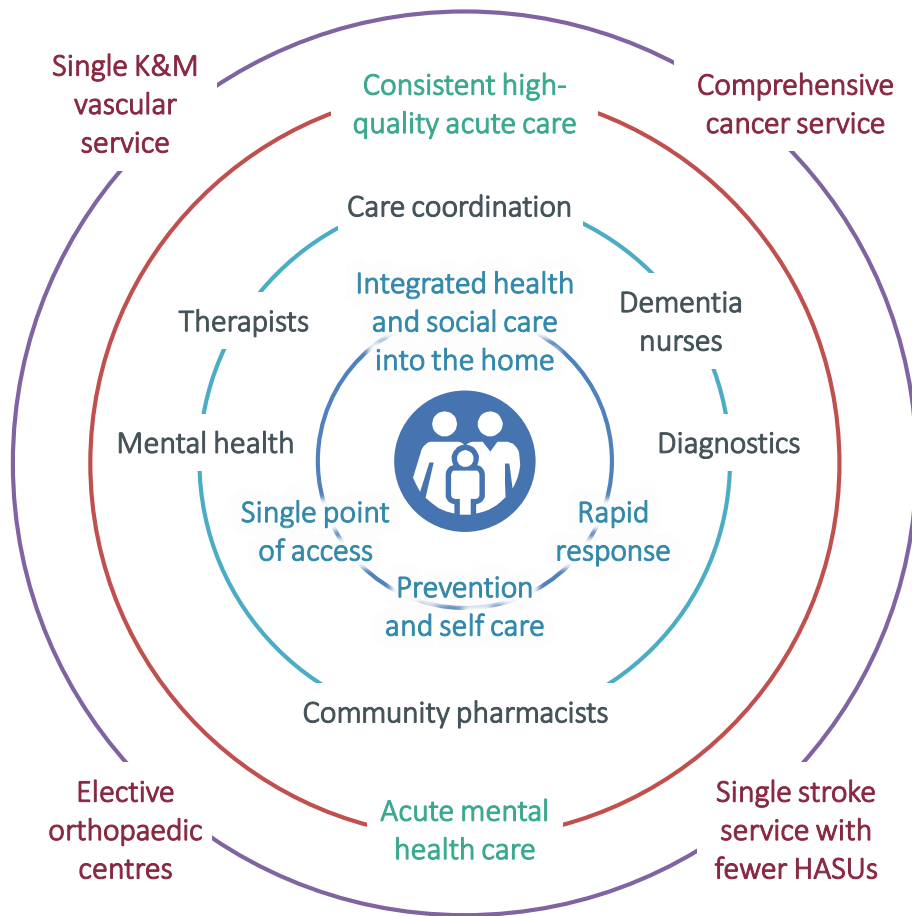
### Prevention

### Hospital Care

### Health & Social Care

## Care Integration

Integrating physical and mental health services, integrating health and social care and supporting people to live fuller lives



# We have agreed that getting this right involves these ingredients

Supporting people to be healthy and independent

1

Care and support planning with care navigation and case management

Care navigators and case managers integrate health and social care service delivery, and work collaboratively with a wide range of community care colleagues, and also the people they care for, in order to coordinate care and support

2

Self-care and management

Support people and their carers to improve and maintain health and wellbeing by building knowledge and changing behaviours through proactive prevention and engagement

3

Healthy living environment

Work to ensure a healthy living environment to preserve long-term health & wellbeing e.g. falls prevention, housing improvements and alterations

4

Integrated health and social care into or coordinated close to the home

Person centered, coordinated multi-disciplinary care services, wrapped around GP practices and community services providing care to people who have care plans assigned dependent on their needs

5

Single point of access

A number called by the person, the GP, community services and acute staff to support people with their care by gaining more efficient, coordinated access to services

6

Rapid Response

The ability within an MDT to respond rapidly to people with complex needs who are experiencing a health or social care need that left unattended would result in a possible hospital admission

7

Discharge planning and reablement

A pro-active, anticipatory service designed to target those people who are medically optimised for discharge, no longer requiring an inpatient bed, but still needing some level of care to prevent their health from deteriorating

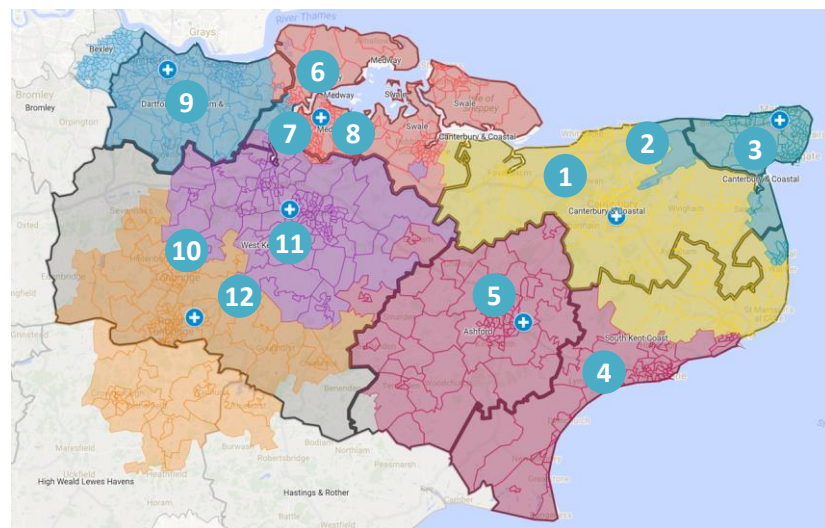
8

Access to expert opinion and timely access to diagnostics

The ability for primary care professionals to access a specialist opinion in the community setting and where appropriate, a specialist triage for diagnostics. Access to diagnostic services and the ability to ensure diagnostic results are full and timely will reduce the need for multiple outpatient appointments

Supporting services

# The strategy for development of Local Care is built on East Kent Models



## East Kent (emerging ACP)

- 1 Encompass MCP
- 2 Herne Bay Local Care
- 3 Thanet IACO
- 4 South Kent Coast IACO
- 5 Ashford Clinical Providers

## “Rest of Kent” (emerging ACP)

- Medway
- 6 MCP
- 7 PACs – Hospital Care
- 8 PACs - MH
- DGS
- 9 PACs
- West Kent
- 10 MCP
- 11 PACs – Hospital Care
- 12 PACs - MH

New Care Model	Population Affected
Encompass MCP	170,000
Herne Bay Local Care	46,000
Thanet IACO	140,000
South Kent Coast IACO	200,000
Ashford Clinical Providers	126,000
Medway (MCP & 2xPACs)	390,000
DGS PACs	249,000
West Kent (MCP & 2xPACs)	466,000

Moving towards a single commissioner, and two accountable care partnerships (ACPs)